

## Hydraulic and Electrical Service Loop Pins

### Affected Units

All Canrig top drive models with a hydraulic and electrical service loop installed.

### Service Loop Pins

The ends of the hydraulic and electrical service loops are held in place using a set of mounting pins. To prevent the pins from sliding out of position, each of these pins is retained with a retaining bolt and a Stover locknut as shown in Figure 1.

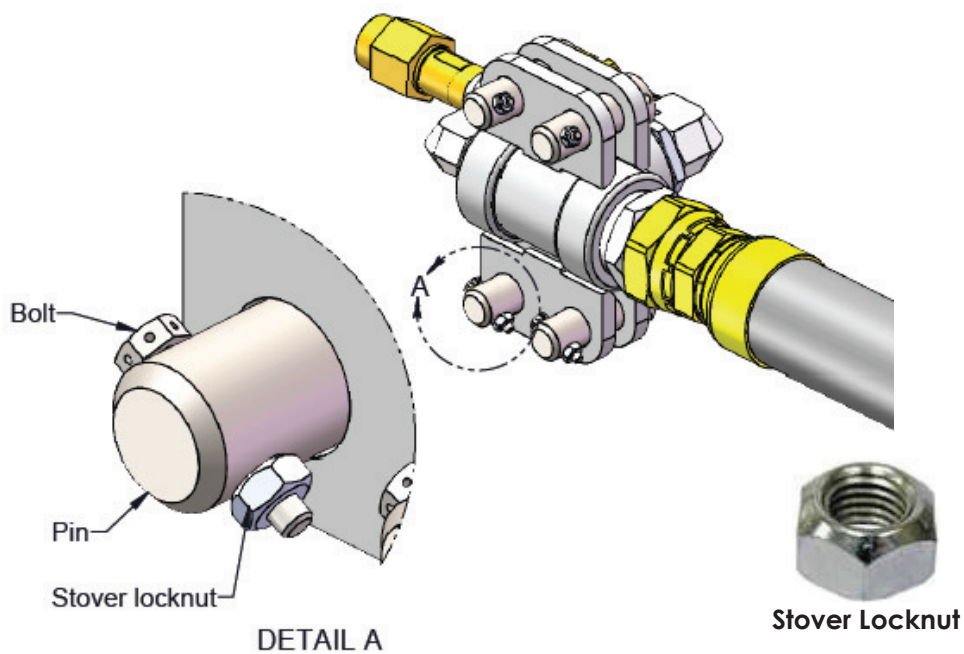


Figure 1: Service Loop Pins



**Caution!** Never use a regular nut to retain these pins as there is a risk they may become loose.

Stover locknuts can withstand vibration and shock loads. When used correctly the locking action is created by distorting the top threads. Stover locknuts should be installed with the conical top facing toward the end of the bolt.



**Note:** Stover nuts should not be used more than twice. If it is unknown how many times the Stover nut has been reinstalled, the bolt and Stover nut must be replaced with new parts.

## Additional Safety Restraint for the Pins

Canrig recommends adding an additional safety restraint to the pins to prevent them from falling in case the retaining hardware fails. This is achieved by attaching a wire rope to the pin heads and looping the other end of the wire rope around the service loop or another secure piece of equipment.

## Procedure

Any of the following options can be used:

### 1a: Drill holes on existing pins

- Drill a 1/4 in. diameter hole in the head of the pin as shown in Figure 2.

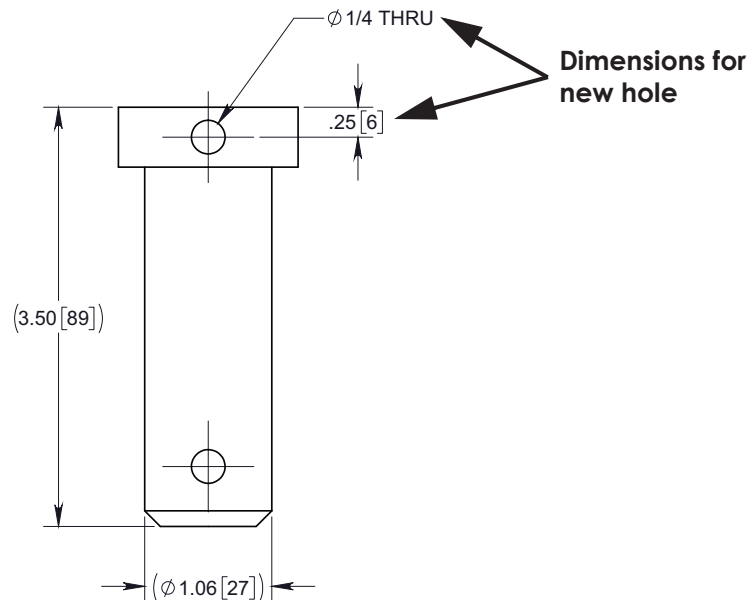


Figure 2: Drilling Hole on Existing Pins

## 1b: Order new pins with pre-drilled holes

- Contact RIGLINE 24/7™ to order new pins according to information shown on Table 1.

**Table 1: Available Part Numbers (Hydraulic and Electrical Service Loops)**

Part Number	Qty	Description
<b>Hydraulic Service Loop</b>		
830-11-0	8	PIN, HYDRAULIC SERVICE LINE
HH-0250NC-0150-GR8-W	8	CAPSCR, HEX HD, 1/4-20UNC X 1.50, GR8, W
LN-0250NC-GR8	8	LOCKNUT, 1/4-20UNC, GR8, STOVER
<b>Electrical Service Loop</b>		
1006-100-375	4	PIN, 1.00 DIA, 3.75 LG, HEAD/R
HH-0250NC-0150-GR8-W	4	CAPSCR, HEX HD, 1/4-20UNC X 1.50, GR8, W
LN-0250NC-GR8	4	LOCKNUT, 1/4-20UNC, GR8, STOVER

## 2.1 Install Wire Rope - Hydraulic Service Loop

- Install wire rope and ferrules as shown in Figure 3. When installing the safety restraint there should be enough slack to remove and install the pins. See Table 2 for information about part numbers and Figure 3 on page 4 for routing the wire rope.

**Table 2: Wire Rope and Ferrules Part Numbers - Hydraulic Service Loop**

Item	Canrig P/N	Description	Qty	Units
1	830-11-0	Pin, Hydraulic Service Line-Loop	8	ea.
2	M10022	Wire rope, 1/8, 7 x 19, Stainless	120 (See Note)	in.
3	M19-3009-010	Ferrule, 1/8, Oval, Aluminum	12	ea.



**Note:** Cut 30 inches to secure two pins (see Figure 3 on page 4).

This length will allow pins to be installed and removed any time without cutting the wire rope.

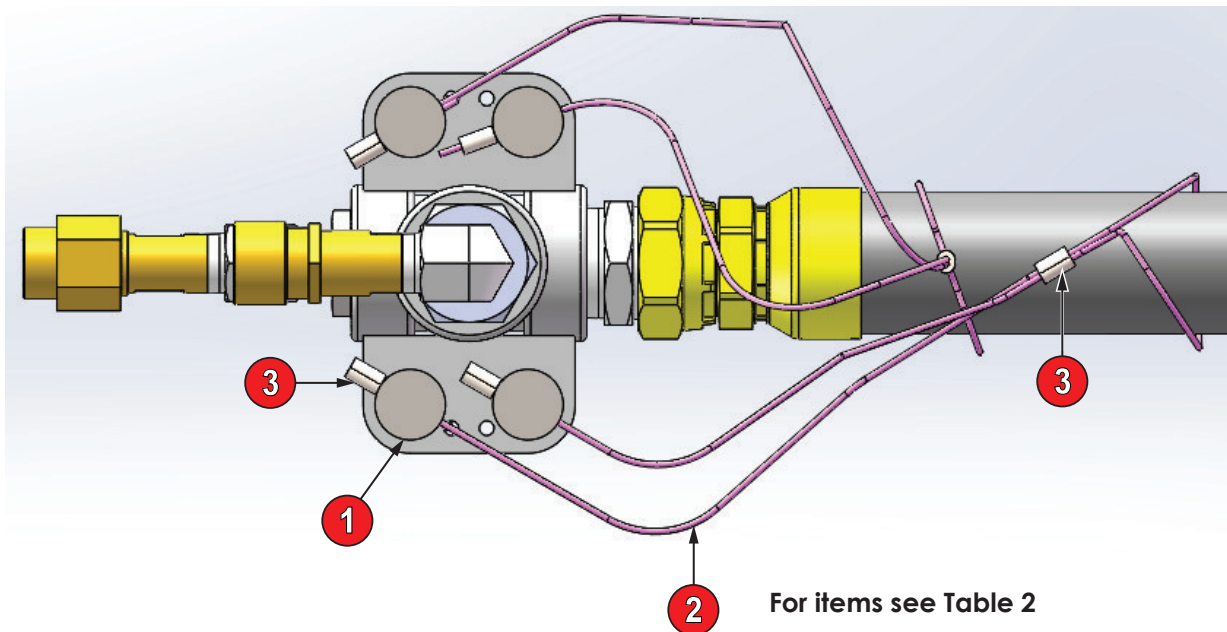
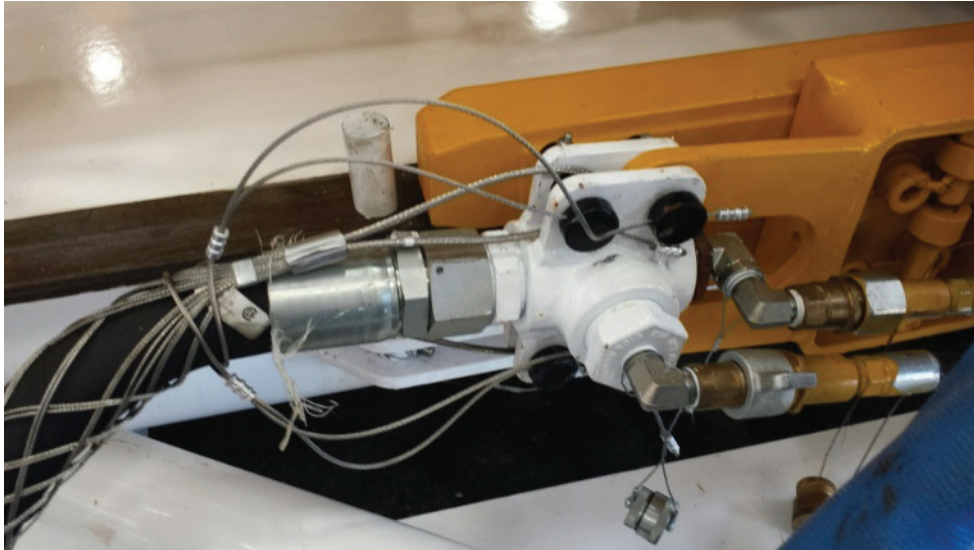


Figure 3: Hydraulic Service Loop

## 2.2 Install Wire Rope - Electrical Service Loop

Install wire rope and ferrules as shown in Figure 4. When installing the safety restraint there should be enough slack to remove and install the pins. See Table 3 for information about part numbers and Figure 4 for routing the wire rope.

**Table 3: Wire Rope and Ferrules Part Numbers - Electrical Service Loop**

Item	Canrig P/N	Description	Qty	Units
1	1006-100-375	Pin, 1.00 DIA, 3.75 LG, HEAD/R	4	ea.
2	M10022	Wire rope, 1/8, 7 x 19, Stainless	60 (See Note)	in.
3	M19-3009-010	Ferrule, 1/8, Oval, Aluminum	6	ea.



**Note:** Cut 30 inches to secure two pins (see Figure 4). This length will allow pins to be installed and removed any time without cutting the wire rope.

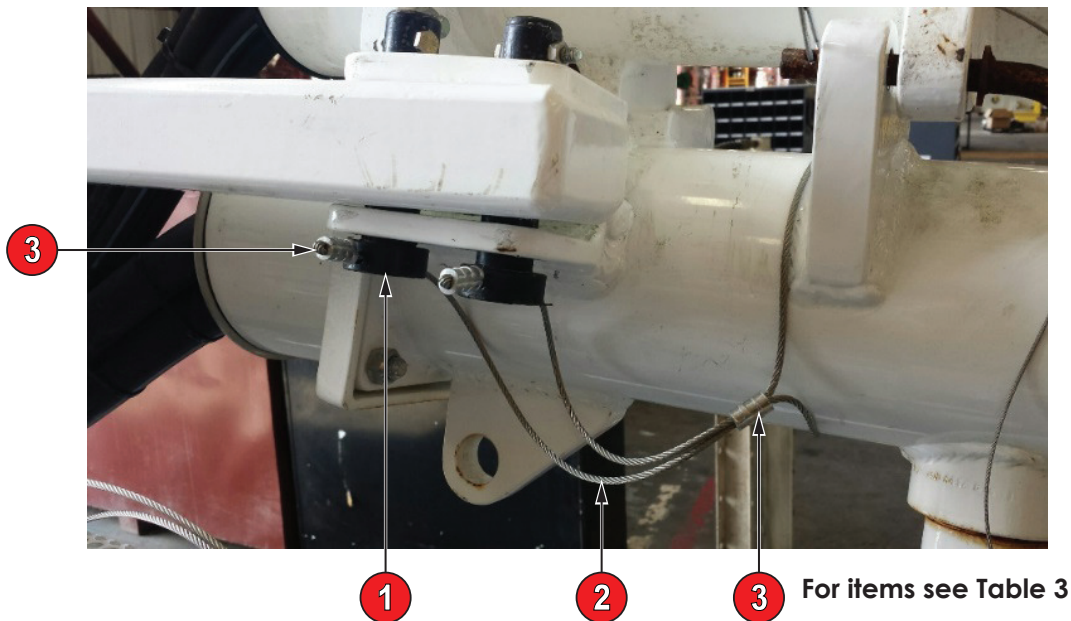


Figure 4: Electrical Service Loop

If additional information is required Contact RIGLINE 24/7™.