



Model: Canrig TD Model 6027AC with Hydraulic Elevator Kit Serial #: See Affected Units	Jan. 24, 2020
Product Bulletin # <b>TDS-211 v 1.0</b> <b>Alert</b>	



## Unintended Elevator Closing during Power Outage

### Issue

Hydraulically powered elevators may close automatically if the Canrig Model 6027 AC TD loses power. This could cause injury to nearby personnel. Affected units have the Hydraulic Elevator Kit (P/N: AY14235) with valve P/N H03-1053-010.

### Affected Units

Canrig TD Model 6027AC with Hydraulic Elevator Kit (P/N: AY14235). See serial numbers below:

- Top Drive S/N 519
- Top Drive S/N 530

### Recommended Actions

1. Immediately inform the crews of the of the risk of the unintended closing of the hydraulically powered elevators when the top drive loses power.
2. Test the elevator function to see if the hazard exists on your top drive. With the TD powered up, perform the following tests:
  - a. Close the elevators, then shut off the power to the TD. The elevator should remain closed.
  - b. Open the elevators, then shut off the power to the TD. The elevator should remain open.
3. If either test fails, at the earliest opportunity, replace the directional control valve P/N: H03-1053-010 with directional control valve H03-1052-010. Verify the hydraulic hoses are installed per schematic below.





Model: Canrig TD Model 6027AC with Hydraulic Elevator Kit	Jan. 24, 2020
Serial #: See Affected Units	
<b>Alert</b>	

See location of the hydraulic elevator valve on the 6027AC top drive below:

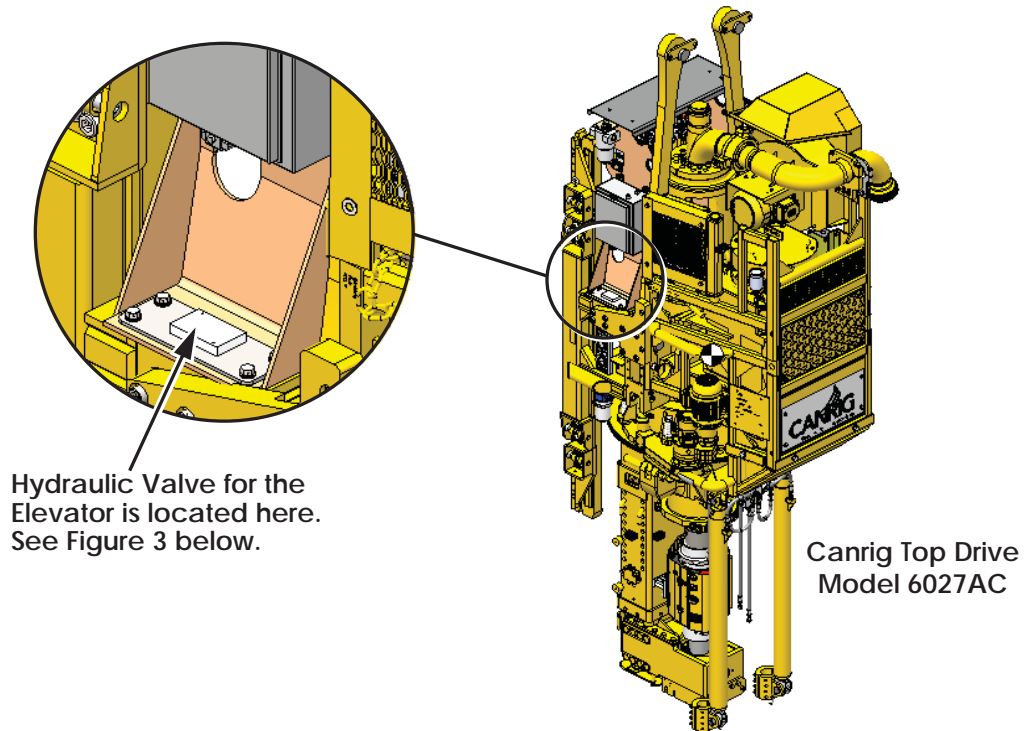


Figure 1: Hydraulic Elevator Valve Location on the 6027AC Top Drive

See figures below for 2-position valve (Figure 2) and 3-position valve (Figure 3).



Figure 2: 2-position valve  
H03-1053-010



Figure 3: 2-position valve  
mounted on Rig 404



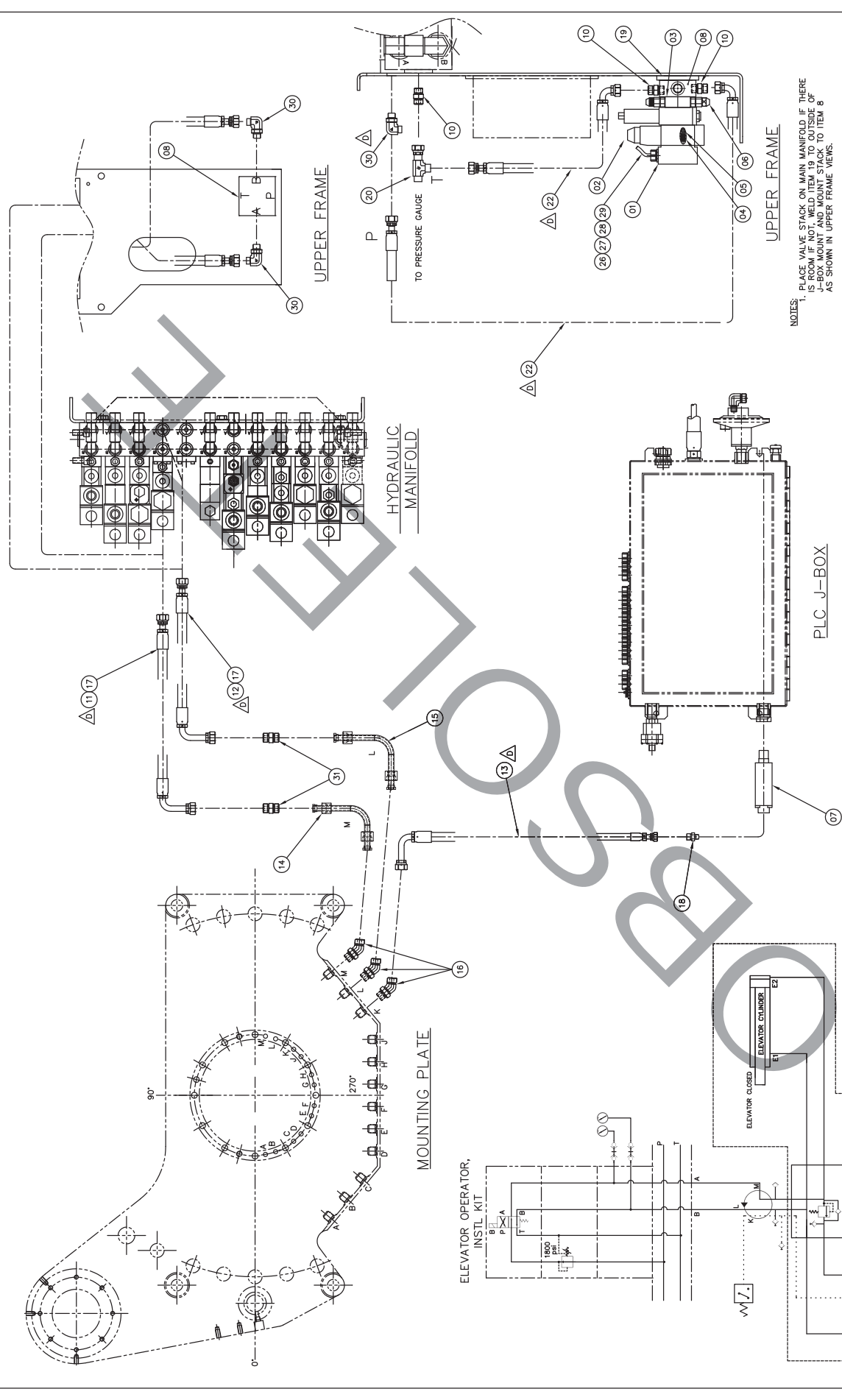
Figure 4: 3-position valve  
H03-1052-010



Model: Canrig TD Model 6027AC with Hydraulic Elevator Kit	Jan. 24, 2020
Serial #: See Affected Units	
<b>Alert</b>	

4. Repeat the above test (Step 2 on page 1) to verify the hydraulic hoses are correctly installed.
5. Contact RIGLINE 24/7™ Support for instructions and to order parts as indicated below:

Canrig P/N	Description	
H03-1053-010	VLV, HYD, DIR, 2 POS, 4 WAY, 24V, D03	Remove this valve
<b>H03-1052-010</b>	<b>VLV, HYD, DIR, 3 POS, 4 WAY, 24V, D03</b>	<b>Order this valve</b>



NO.	BY	DATE	DESCRIPTION
D	JMS	15/03/03	JMS
C	GRY	08/03/10	MSD
B	SCA	08/01/15	VM
A	DAA	07/08/11	VM

REVISION	DESCRIPTION
BY	DATE
BY	DATE
BY	DATE

THIS PRINT & DESIGN ARE THE PROPERTY AND INVENTION OF CANRIG. NO PARTS OF THIS PRINT OR DESIGN ARE TO BE REPRODUCED OR TRANSMITTED IN ANY FORM OR BY ANY MEANS, WITHOUT PERMISSION AND WRITTEN PERMISSION FROM CANRIG. ALL RIGHTS OF DESIGN AND INVENTION ARE RESERVED BY CANRIG. CANRIG DRINKING TECHNOLOGY LTD.
WELDING PROCEDURE UNLESS NOTED OTHERWISE AS PER CANRIG SPECIFICATION - ENG 704
TOLERANCE - UNLESS OTHERWISE SPECIFIED FABRICATING IMPERIAL (IN) FABRICATING METRIC (MM)
CASTING REMOVE SHARP CORNERS AND BURRS
STRAIGHTNESS
SQUARENESS
TRUE POSITION
MACHINED SURFACES
RADIUS UNLESS SHOWN = 0.03 MAX.

DATE	BY	DESCRIPTION
07/10/11	VM	VM
07/11/07	GRY	GRY
07/11/07	TDV	TDV
07/11/07	GRY	GRY

WELDING PROCEDURE UNLESS NOTED OTHERWISE AS PER CANRIG SPECIFICATION - ENG 704

TOLERANCE - UNLESS OTHERWISE SPECIFIED FABRICATING IMPERIAL (IN) FABRICATING METRIC (MM)

CASTING REMOVE SHARP CORNERS AND BURRS

STRAIGHTNESS

SQUARENESS

TRUE POSITION

MACHINED SURFACES

RADIUS UNLESS SHOWN = 0.03 MAX.

NOTES:

- PLACE VALVE STACK ON MAIN MANIFOLD IF THERE IS NO ROOM FOR THE VALVE STACK TO BE MOUNTED AS SHOWN IN UPPER FRAME VIEWS.
- ITEM 23 (L & M PORTS) AND ITEM 25 (K PORT) NOT SHOWN CONNECT FROM OVERSLEEVE TO ELEVATOR'S MANIFOLD.

PLC J-BOX

HYDRAULIC MANIFOLD

UPPER FRAME

MOUNTING PLATE

BY CUSTOMER

ELEVATOR OPERATOR, INSTL KIT, 275

TO PRESSURE GAUGE

ELEVATOR CYLINDER

LATCH CYLINDER

FEEDBACK VALVE

1-4

SCALE

EST. WEIGHT

PROJECT

REV D

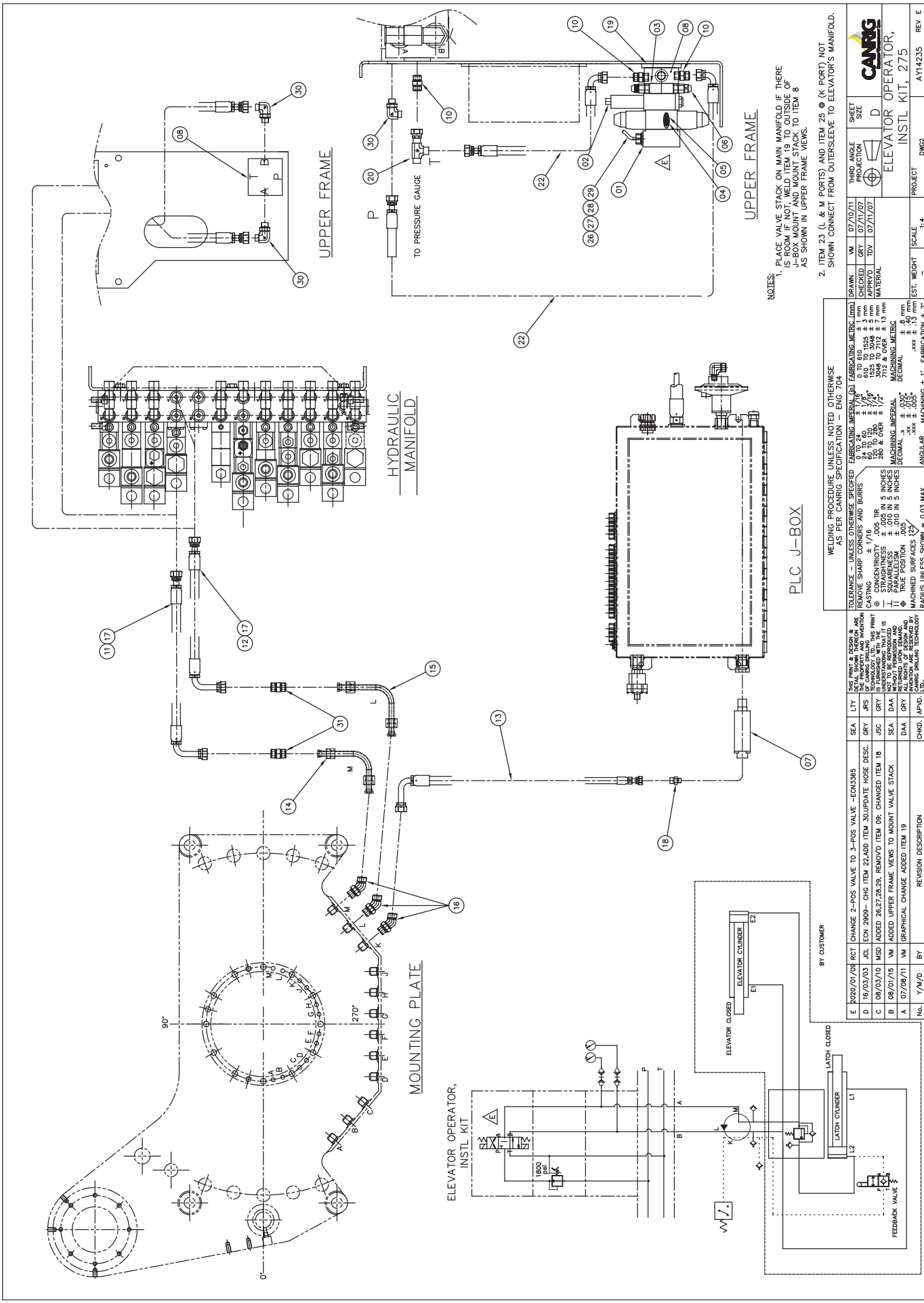
AY14235

**Part:** AY14235  
**Description:** ELEVATOR OPERATOR, INSTL KIT, 275

**Eng ID:** 3  
**Drawing ID:** AY14235

**Rev No:** D

Item	Qty	Units	Part ID	Eng ID	Description
01	1.00	EA	H03-1053-010		VLV, HYD, DIR, 2 POS, 4 WAY, 24V, D03
02	1.00	EA	H05-1001-020		PRESSURE REDUCING VALVE
03	1.00	EA	H12-1002-010		MANIFOLD, TAP-IN, D03 SAE
04	4.00	EA	H13-1035-01A		STUDNUT, 10 - 24
05	4.00	EA	H13-1036-419	0	THREADED ROD, 10-24 x 4.19 in Lg
06	2.00	EA	H22-1000-010		TEST STATION, #4 SAE
07	1.00	EA	N10058		SWITCH, PRESSURE, 700-3100 PSI
08	1.00	EA	H10359		SUBPLATE, D03, #8 SAE, SIDE PORT, AL
10	3.00	EA	H15-520120-08-08		ADPT, 1/2 MORFS, 1/2 MORB
11	1.00	EA	F387TCJSJ9080808-69.75-X-6	0	HOSE ASSY, 1/2, SWV STR, 90 SHT, 69.75
12	1.00	EA	F387TCJSJ1080808-69.75-X-6	0	HOSE ASSY, 1/2, SWV STR, 90 LG, 69.75
13	1.00	EA	F387TCJSJ9080808-86.75-X-8	0	HOSE ASSY, 1/2, SWV STR, 90 SHT, 86.75
14	1.00	EA	DT16601	0	HYDRAULIC, EXTENTION TUBE M PORT
15	1.00	EA	DT16602	0	HYDRAULIC EXTENTION TUBE L PORT
16	3.00	EA	H15-520320-08		ELL 45°, MALE 1/2 ORFS, MALE 1/2 ORB
17	1.00	EA	H10207		PROTECTIVE SLEEVE, NYL, 1.22 DIA.x 18 LG
18	1.00	EA	H15-2001-08-04		ADAPTER, MALE 1/2 ORFS, MALE 1/4 NPT
19	1.00	EA	DT17187	0	MOUNT, SUBPLATE
20	1.00	EA	H15-520429-08		TEE, MALE 1/2 ORB BRANCH, MALE 1/2 ORFS
21	3.00	EA	H15-520220-08-12		ELL 90°, MALE 1/2 ORFS, MALE 3/4 ORB
22	2.00	EA	F387TCJSJ9080808-40.75-X-3	0	HOSE ASSY, 1/2, SWV STR, 90 SHT, 40.75
23	2.00	EA	F387TCJSJS080808-182.75-X	0	HOSE ASSY, 1/2, SWV STR, SWV STR, 182.75
25	1.00	EA	F387TCJSJ9040804-182.88-X-	0	HOSE ASSY, 1/4, SWV STR, 1/2 90 SHT, 182
26	10.00	FT	E03-1023-010		CABLE, 4 C #16 AWG, EXANE, 600V
27	2.00	EA	E04-5046-010		LOCKNUT, CONDUIT FTG, 1/2 NPT
28	2.00	EA	E04-2027-010		SEALING RING, 1/2 NPT
29	2.00	EA	E04-2002-010		STRAIN RELIEF, 1/2 NPT, 0.375 - 0.500
30	3.00	EA	H15-520220-08-08		ELL 90°, MALE 1/2 ORFS, MALE 1/2 ORB
31	2.00	EA	H15-520101-08		UNION, MALE 1/2 ORFS



NOTES:  
 1. PLACE VALVE STACK ON MAIN MANIFOLD IF THERE IS ROOM IF NOT, WELD ITEM 19 TO OUTSIDE OF J-BOX MOUNT AND MOUNT STACK TO ITEM 8 AS SHOWN IN UPPER FRAME VIEWS.  
 2. ITEM 23 (L & M PORTS) AND ITEM 25 @ (K-PORT) NOT SHOWN. CONNECT FROM OUTERSLEEVE TO ELEVATOR'S MANIFOLD.

WELDING PROCEDURE UNLESS NOTED OTHERWISE AS PER CANRIG SPECIFICATION - ENG 704

TOLERANCE - UNLESS OTHERWISE SPECIFIED	FABRICATING MATERIAL	FABRICATING METHOD	UNIT
0 TO 610	± 1 mm		
610 TO 914	± 1.5 mm		
915 TO 1524	± 3 mm		
1525 TO 3048	± 5 mm		
3049 TO 6096	± 10 mm		
6097 TO 7620	± 15 mm		
7621 & OVER	± 20 mm		
		MACHINING - METRIC	UNIT
		± .05	mm
		± .10	mm
		± .15	mm
		± .20	mm
		± .25	mm
		± .30	mm
		± .35	mm
		± .40	mm
		± .45	mm
		± .50	mm
		± .55	mm
		± .60	mm
		± .65	mm
		± .70	mm
		± .75	mm
		± .80	mm
		± .85	mm
		± .90	mm
		± .95	mm
		± 1.00	mm
		± 1.05	mm
		± 1.10	mm
		± 1.15	mm
		± 1.20	mm
		± 1.25	mm
		± 1.30	mm
		± 1.35	mm
		± 1.40	mm
		± 1.45	mm
		± 1.50	mm
		± 1.55	mm
		± 1.60	mm
		± 1.65	mm
		± 1.70	mm
		± 1.75	mm
		± 1.80	mm
		± 1.85	mm
		± 1.90	mm
		± 1.95	mm
		± 2.00	mm
		± 2.05	mm
		± 2.10	mm
		± 2.15	mm
		± 2.20	mm
		± 2.25	mm
		± 2.30	mm
		± 2.35	mm
		± 2.40	mm
		± 2.45	mm
		± 2.50	mm
		± 2.55	mm
		± 2.60	mm
		± 2.65	mm
		± 2.70	mm
		± 2.75	mm
		± 2.80	mm
		± 2.85	mm
		± 2.90	mm
		± 2.95	mm
		± 3.00	mm
		± 3.05	mm
		± 3.10	mm
		± 3.15	mm
		± 3.20	mm
		± 3.25	mm
		± 3.30	mm
		± 3.35	mm
		± 3.40	mm
		± 3.45	mm
		± 3.50	mm
		± 3.55	mm
		± 3.60	mm
		± 3.65	mm
		± 3.70	mm
		± 3.75	mm
		± 3.80	mm
		± 3.85	mm
		± 3.90	mm
		± 3.95	mm
		± 4.00	mm
		± 4.05	mm
		± 4.10	mm
		± 4.15	mm
		± 4.20	mm
		± 4.25	mm
		± 4.30	mm
		± 4.35	mm
		± 4.40	mm
		± 4.45	mm
		± 4.50	mm
		± 4.55	mm
		± 4.60	mm
		± 4.65	mm
		± 4.70	mm
		± 4.75	mm
		± 4.80	mm
		± 4.85	mm
		± 4.90	mm
		± 4.95	mm
		± 5.00	mm
		± 5.05	mm
		± 5.10	mm
		± 5.15	mm
		± 5.20	mm
		± 5.25	mm
		± 5.30	mm
		± 5.35	mm
		± 5.40	mm
		± 5.45	mm
		± 5.50	mm
		± 5.55	mm
		± 5.60	mm
		± 5.65	mm
		± 5.70	mm
		± 5.75	mm
		± 5.80	mm
		± 5.85	mm
		± 5.90	mm
		± 5.95	mm
		± 6.00	mm

REVISION DESCRIPTION

No.	Y/M/D	BY	REVISION DESCRIPTION
E	2020/01/04	VM	CHANGE 2-POS VALVE TO 3-POS VALVE - EON385
D	16/03/03	JCL	EON 2909 - CHG ITEM 22 ADD ITEM 30 UPDATE HOSE (ESC.
C	09/03/01	MSD	ADDED 26,27,28,29. REMOVED ITEM 09; CHANGED ITEM 18
B	09/01/15	VM	ADDED UPPER FRAME VIEWS TO MOUNT VALVE STACK
A	07/09/11	VM	GRAPHICAL CHANGE ADDED ITEM 19

DESIGNED BY	CHKD.	APP'D.	DATE
DRAWN BY	CHKD.	APP'D.	DATE
CHECKED BY	CHKD.	APP'D.	DATE
APPROVED BY	CHKD.	APP'D.	DATE
MATERIAL	DATE	DATE	DATE
PROJECT	SCALE	WEIGHT	EST. WEIGHT
INSTL KIT - 275	1:4	-	± 2'
ELEVATOR OPERATOR,			
PLC J-BOX			
HYDRAULIC MANIFOLD			
UPPER FRAME			
MOUNTING PLATE			
ELEVATOR OPERATOR, INSTL KIT			
BY CUSTOMER			
ELEVATOR CLOSED			
LATCH CYLINDER			
LATCH VALVE			
FEEDBACK VALVE			
ELEVATOR OPERATOR, INSTL KIT			



# Engineering Bill of Material

**Part:** AY14235  
**Description:** ELEVATOR OPERATOR, INSTL KIT, 275

**Eng ID:** 4  
**Drawing ID:** AY14235

**Rev No:** E

Item	Qty	Units	Part ID	Eng ID	Description
01	1.00	EA	H03-1052-010		VLV, HYD, DIR, 3 POS, 4 WAY, 24V, D03
02	1.00	EA	H05-1001-020		PRESSURE REDUCING VALVE
03	1.00	EA	H12-1002-010		MANIFOLD, TAP-IN, D03 SAE
04	4.00	EA	H13-1035-01A		STUDNUT, 10 - 24
05	4.00	EA	H13-1036-419	0	THREADED ROD, 10-24 x 4.19 in Lg
06	2.00	EA	H22-1000-010		TEST STATION, #4 SAE
07	1.00	EA	N10058		SWITCH, PRESSURE, 700-3100 PSI
08	1.00	EA	H10359		SUBPLATE, D03, #8 SAE, SIDE PORT, AL
10	3.00	EA	H15-520120-08-08		ADPT, 1/2 MORFS, 1/2 MORB
11	1.00	EA	F387TCJSJ9080808-69.75-X-6	0	HOSE ASSY, 1/2, SWV STR, 90 SHT, 69.75
12	1.00	EA	F387TCJSJ1080808-69.75-X-6	0	HOSE ASSY, 1/2, SWV STR, 90 LG, 69.75
13	1.00	EA	F387TCJSJ9080808-86.75-X-8	0	HOSE ASSY, 1/2, SWV STR, 90 SHT, 86.75
14	1.00	EA	DT16601	0	HYDRAULIC, EXTENTION TUBE M PORT
15	1.00	EA	DT16602	0	HYDRAULIC EXTENTION TUBE L PORT
16	3.00	EA	H15-520320-08		ELL 45°, MALE 1/2 ORFS, MALE 1/2 ORB
17	1.00	EA	H10207		PROTECTIVE SLEEVE, NYL, 1.22 DIA.x 18 LG
18	1.00	EA	H15-2001-08-04		ADAPTER, MALE 1/2 ORFS, MALE 1/4 NPT
19	1.00	EA	DT17187	0	MOUNT, SUBPLATE
20	1.00	EA	H15-520429-08		TEE, MALE 1/2 ORB BRANCH, MALE 1/2 ORFS
21	3.00	EA	H15-520220-08-12		ELL 90°, MALE 1/2 ORFS, MALE 3/4 ORB
22	2.00	EA	F387TCJSJ9080808-40.75-X-3	0	HOSE ASSY, 1/2, SWV STR, 90 SHT, 40.75
23	2.00	EA	F387TCJSJS080808-182.75-X	0	HOSE ASSY, 1/2, SWV STR, SWV STR, 182.75
25	1.00	EA	F387TCJSJ9040804-182.88-X-	0	HOSE ASSY, 1/4, SWV STR, 1/2 90 SHT, 182
26	10.00	FT	E03-1023-010		CABLE, 4 C #16 AWG, EXANE, 600V
27	2.00	EA	E04-5046-010		LOCKNUT, CONDUIT FTG, 1/2 NPT
28	2.00	EA	E04-2027-010		SEALING RING, 1/2 NPT
29	2.00	EA	E04-2002-010		STRAIN RELIEF, 1/2 NPT, 0.375 - 0.500
30	3.00	EA	H15-520220-08-08		ELL 90°, MALE 1/2 ORFS, MALE 1/2 ORB
31	2.00	EA	H15-520101-08		UNION, MALE 1/2 ORFS